

PREVENTING & REPORTING UI FRAUD

What is Employer Unemployment Insurance (UI) Fraud?

When an employer knowingly provides false information or withholds facts to avoid or reduce UI contribution liability or assists a claimant in receiving benefits that are not due.

UI FRAUD IS A CRIME!

For more information about UI fraud, visit dwd.wisconsin.gov/ui/fraud

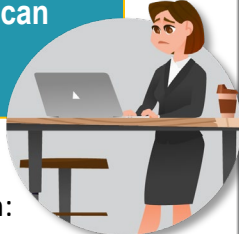


Examples of Employer UI Fraud

- Deliberately reporting incorrect or zero wages.
- Intentionally misclassifying employees as independent contractors.
- Banking hours in an attempt to conceal workers' employment during claimed weeks.
- Paying workers off-the-books or under-the-table wages to avoid paying UI taxes.
- Manipulating payrolls by shifting workers between employer accounts to improperly use a lower contribution tax rate.
- Knowingly providing false information regarding a worker's separation from employment or failing to respond to a claim notice that a worker has filed a UI claim while still working for you.

Consequences of Employer UI Fraud

UI fraud is a serious offense that can carry severe penalties.



For example, it may result in:

- Liens, fines, and a court-ordered operating suspension against your business.
- The fraudulent behavior being shared between state and federal agencies.
- Prosecution or even jail.

Ways to Avoid UI Fraud

- Report the reason for employee separation quickly and accurately.
- Report new hires within 20 days and rehires if 60 days have passed from their first day of employment at dwd.wisconsin.gov/uinh
- Respond promptly to all information requests.
- File quarterly UI Tax and Wage reports and pay UI taxes timely.
- Attend appeal hearings.



We Need Your Help Stopping UI Fraud!

If you know or suspect a business or individual is committing UI fraud, please contact us!



Submit online using our web form:
dwd.wisconsin.gov/ui/fraud/report.htm



Call the UI Fraud Hotline at:
(800) 909-9472
M-F 8 a.m. to 4 p.m.

Visit dwd.wisconsin.gov/ui/sides for more information about responding electronically to UI Forms